

# SHAG WEAR

NECKLACES VOL.6



**BEAD WORLD INCORPORATED**  
10150 - 156 STREET NW  
EDMONTON, ALBERTA  
T5P 2P9

PHONE: (780) 484 - 2263  
FAX: (780) 487 - 8080  
Email: [admin@beadworld.ca](mailto:admin@beadworld.ca)  
Website: [www.beadworld.ca](http://www.beadworld.ca)

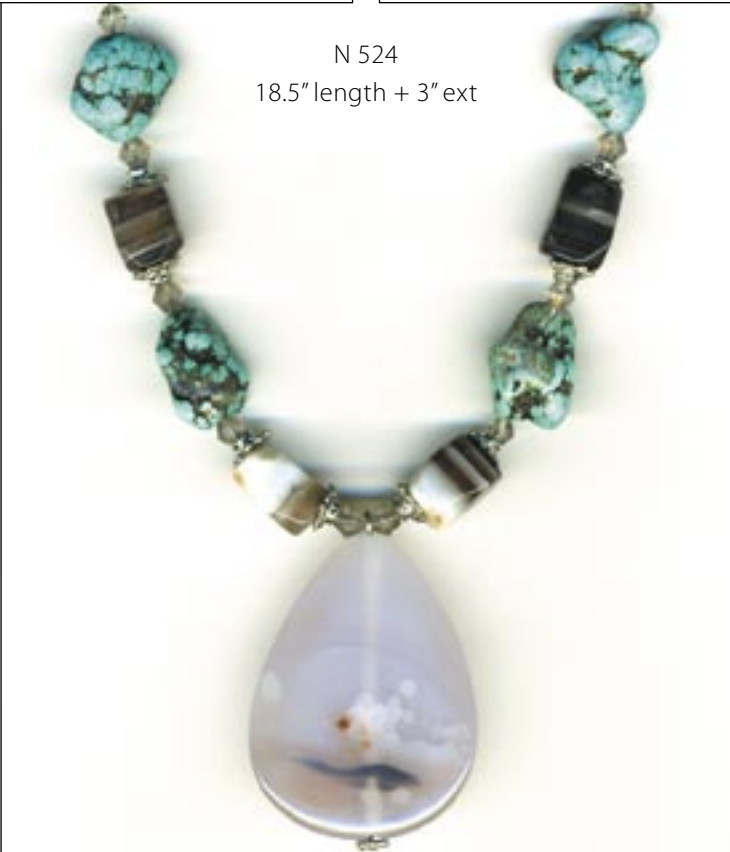
SEMI-PRECIOUS NECKLACES



N 522  
17" length + 3" ext



N 523  
18" length + 3" ext



N 524  
18.5" length + 3" ext

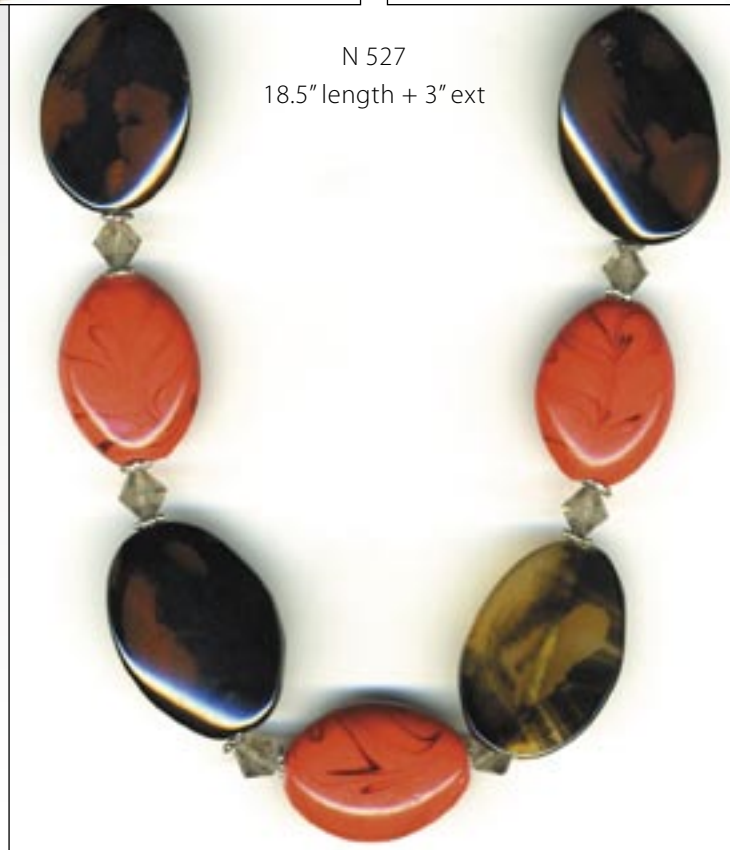
# SEMI-PRECIOUS NECKLACES



N 525  
19" length + 3" ext



N 526  
18.5" length + 3" ext



N 527  
18.5" length + 3" ext

# ENAMEL-METALLIC NECKLACES

N 495  
16" length + 3" ext



N 496  
16" length + 3" ext



N 497  
16" length + 3" ext



N 508  
16" length + 3" ext



N 509  
16" length + 3" ext

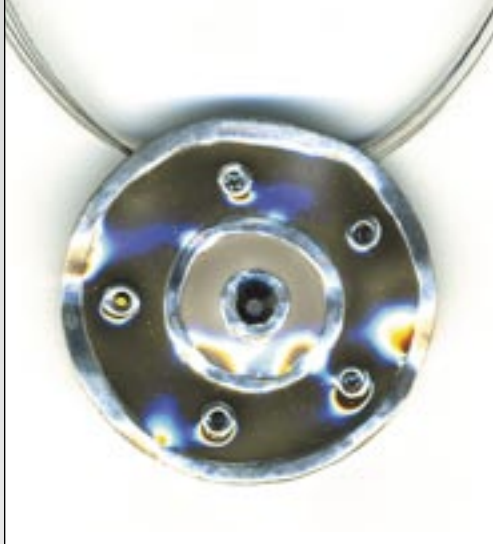


N 510  
16" length + 3" ext

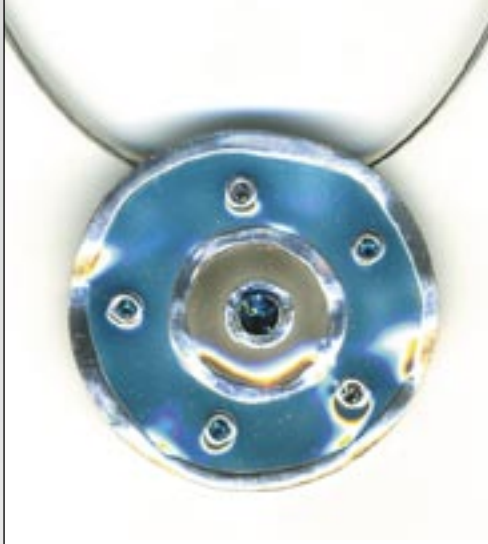


# ENAMEL-METALLIC NECKLACES

N 511  
16" length + 3" ext



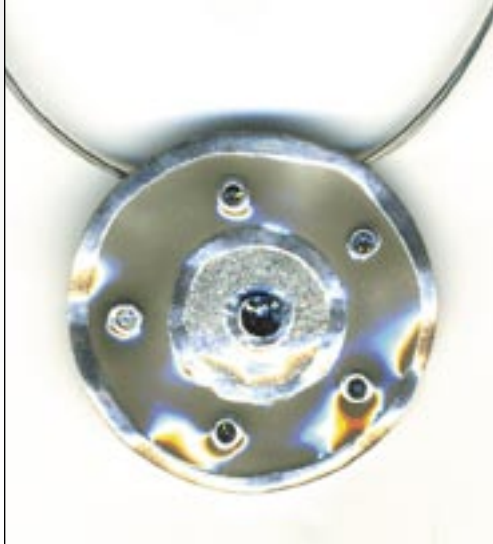
N 512  
16" length + 3" ext



N 513  
16" length + 3" ext



N 514  
16" length + 3" ext



N 515  
16" length + 3" ext



N 516  
16" length + 3" ext



# ENAMEL-METALLIC NECKLACES

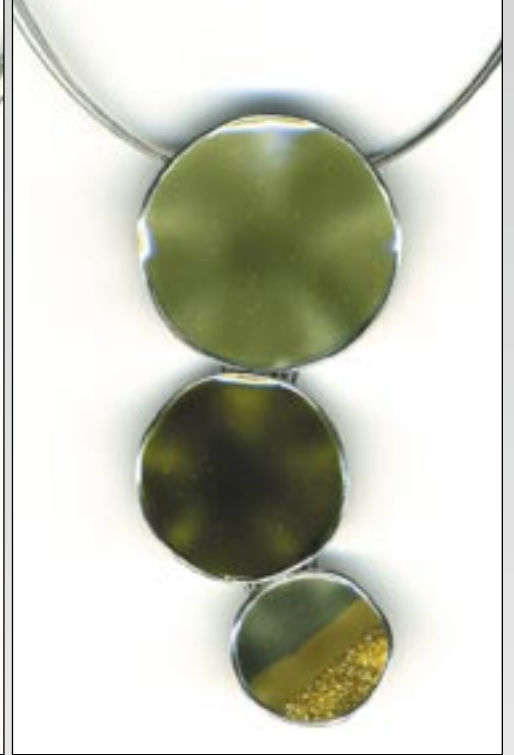
N 504  
16" length + 3" ext



N 505  
16" length + 3" ext



N 506  
16" length + 3" ext



N 507  
16" length + 3" ext



N 517  
16" length + 3" ext



N 493  
16" length + 3" ext



# ENAMEL-METALLIC NECKLACES



# ENAMEL-METALLIC NECKLACES



# METALLIC NECKLACES

N 440  
16" length  
+ 3" ext



N 439  
34" length  
+ 3" ext



N 434  
16" length + 3" ext



N 436  
16" length + 3" ext



N 433  
16" length + 3" ext



# METALLIC NECKLACES

N 491  
16" length + 3" ext



N 499  
14.5" length + 1.5" ext



N 500  
14.5" length + 1.5" ext



N 520  
16" length + 3" ext



# METALLIC NECKLACES



# PHILLIPINE NECKLACES



N 484  
17" length + 2" ext



N 485  
17" length + 2" ext



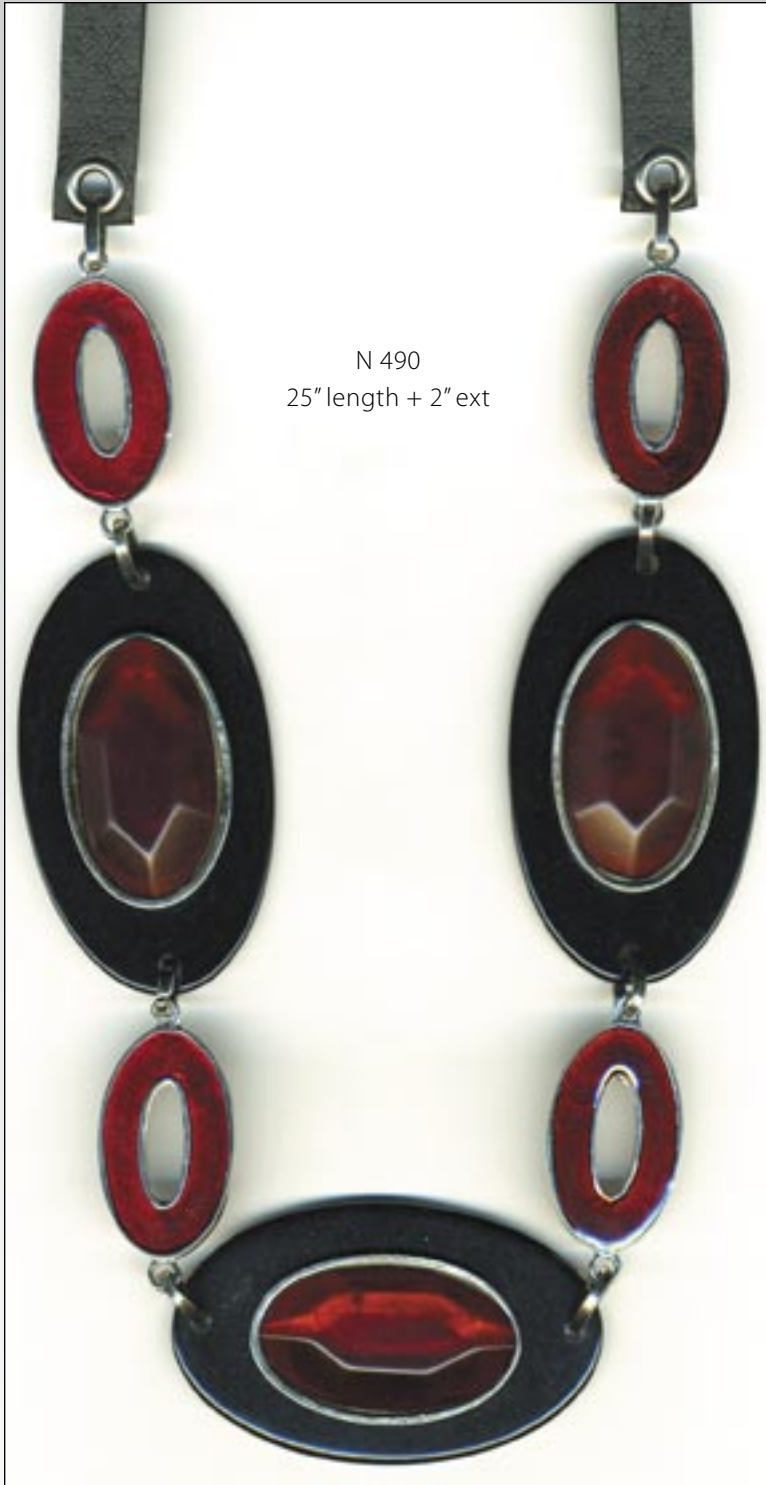
N 486  
17" length + 2" ext



N 487  
17" length + 2" ext



N 488  
17" length + 2" ext



N 490  
25" length + 2" ext



N 489  
25" length + 2" ext

# PHILLIPINE NECKLACES



N 446  
17" length + 2.5" ext



N 454  
17" length + 2.5" ext



N 455  
17" length + 2.5" ext



N 472  
17" length + 2" ext



N 473  
17" length + 2" ext



N 474  
17" length + 2" ext

PHILLIPINE NECKLACES



N 456  
17" length + 2.5" ext



N 457  
17" length + 2.5" ext



N 467  
17" length + 2.5" ext



N 475  
17" length + 2" ext



N 476  
17" length + 2" ext



N 477  
17" length + 2" ext

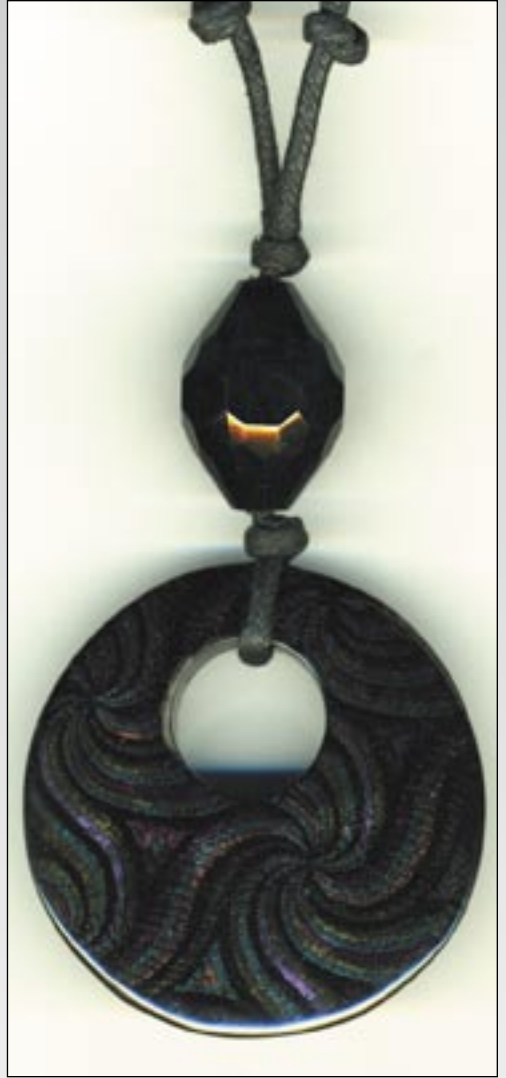
# PHILIPPINE NECKLACES



N 447  
adjustable cord



N 448  
adjustable cord



N 449  
adjustable cord



N 479  
17" length + 2" ext



N 480  
17" length + 2" ext



N 481  
17" length + 2" ext

PHILLIPINE NECKLACES



N 450  
adjustable cord



N 451  
adjustable cord



N 468  
adjustable cord



N 482  
17" length + 2" ext



N 483  
17" length + 2" ext



N 478  
17" length + 2" ext

# PHILIPPINE NECKLACES



N 443  
adjustable cord



N 444  
adjustable cord



N 445  
adjustable cord



PHIL 250  
16.5" length



PHIL 251  
16.5" length



PHIL 252  
16.5" length



N 452  
adjustable cord



N 453  
adjustable cord



PHIL 253  
16.5" length

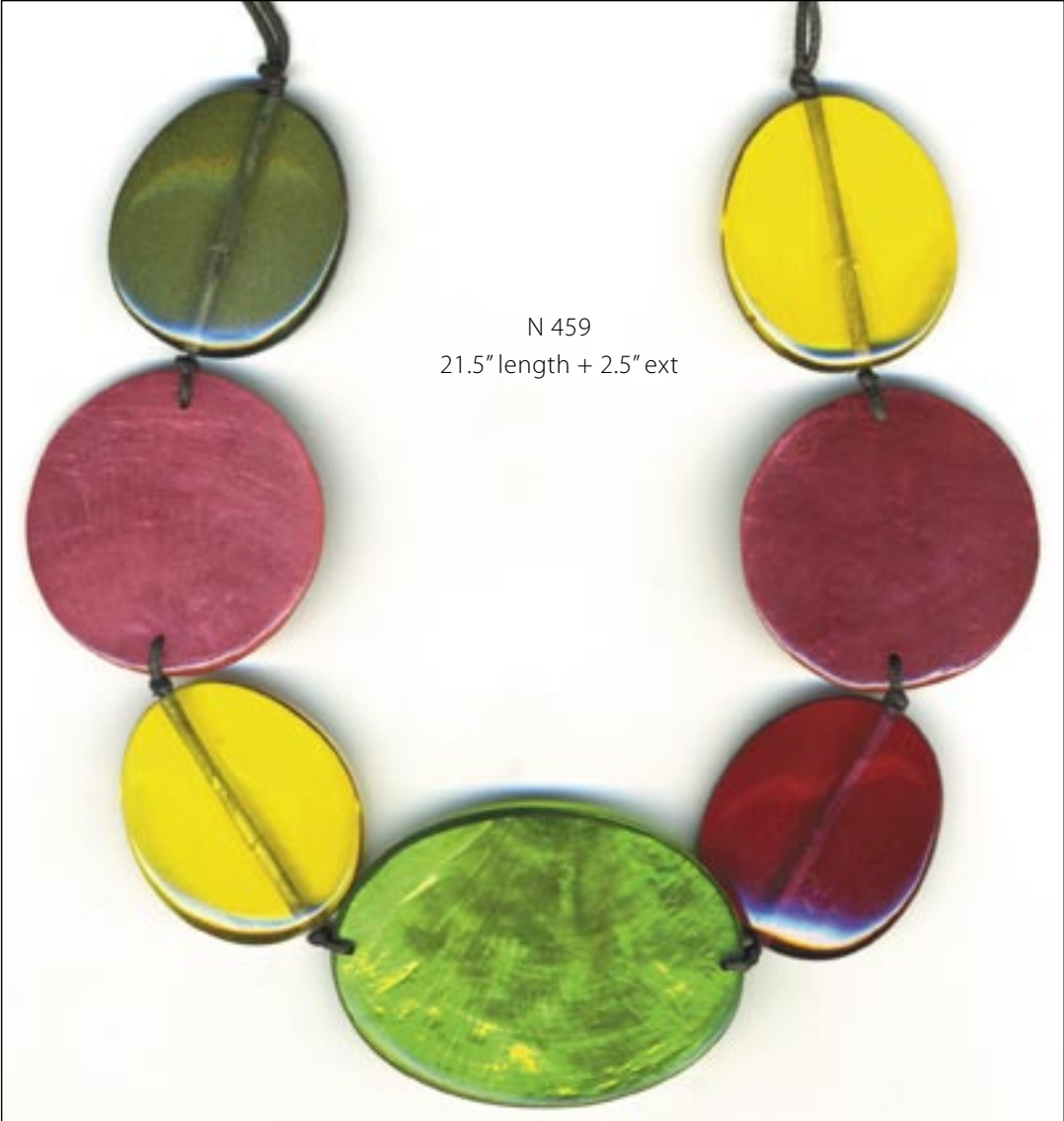


PHIL 254  
16.5" length



PHIL 255  
16.5" length

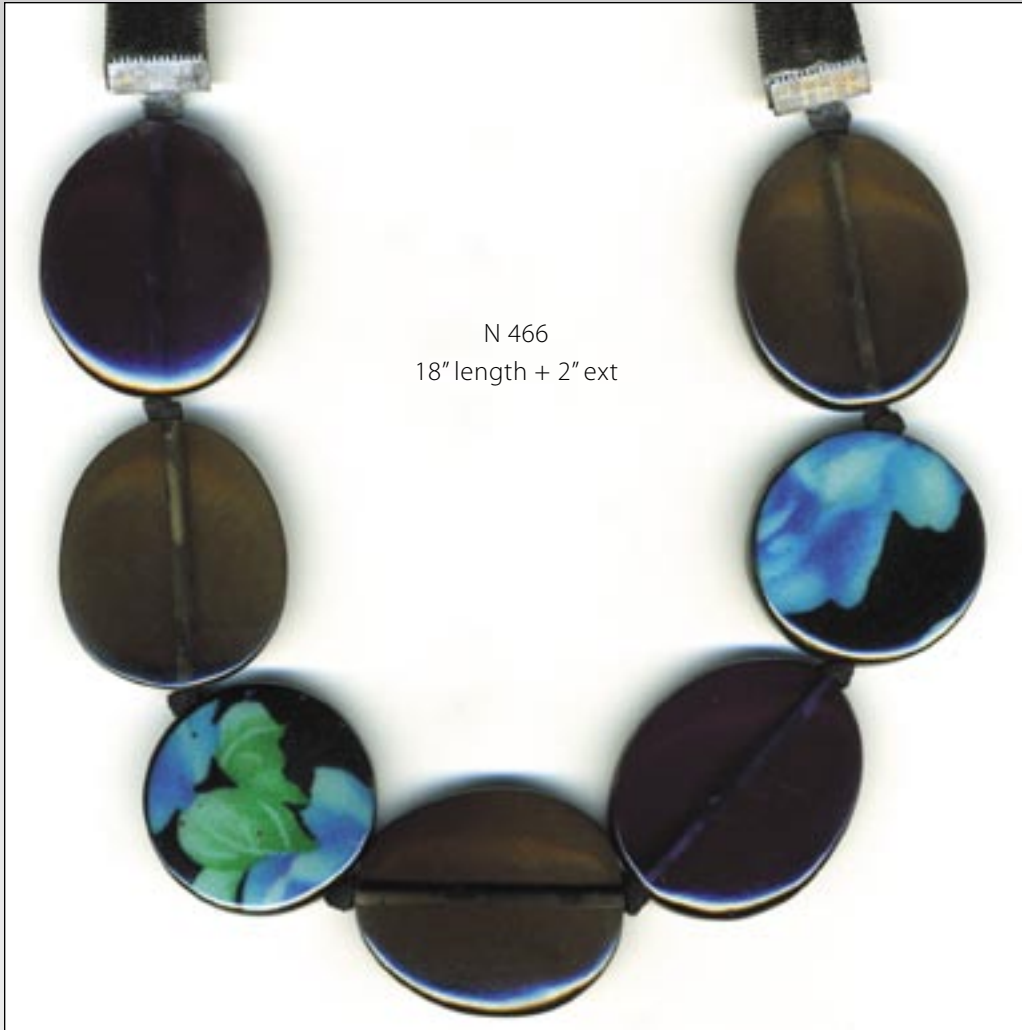
PHILLIPINE NECKLACES



N 459  
21.5" length + 2.5" ext



N 458  
21.5" length + 2.5" ext

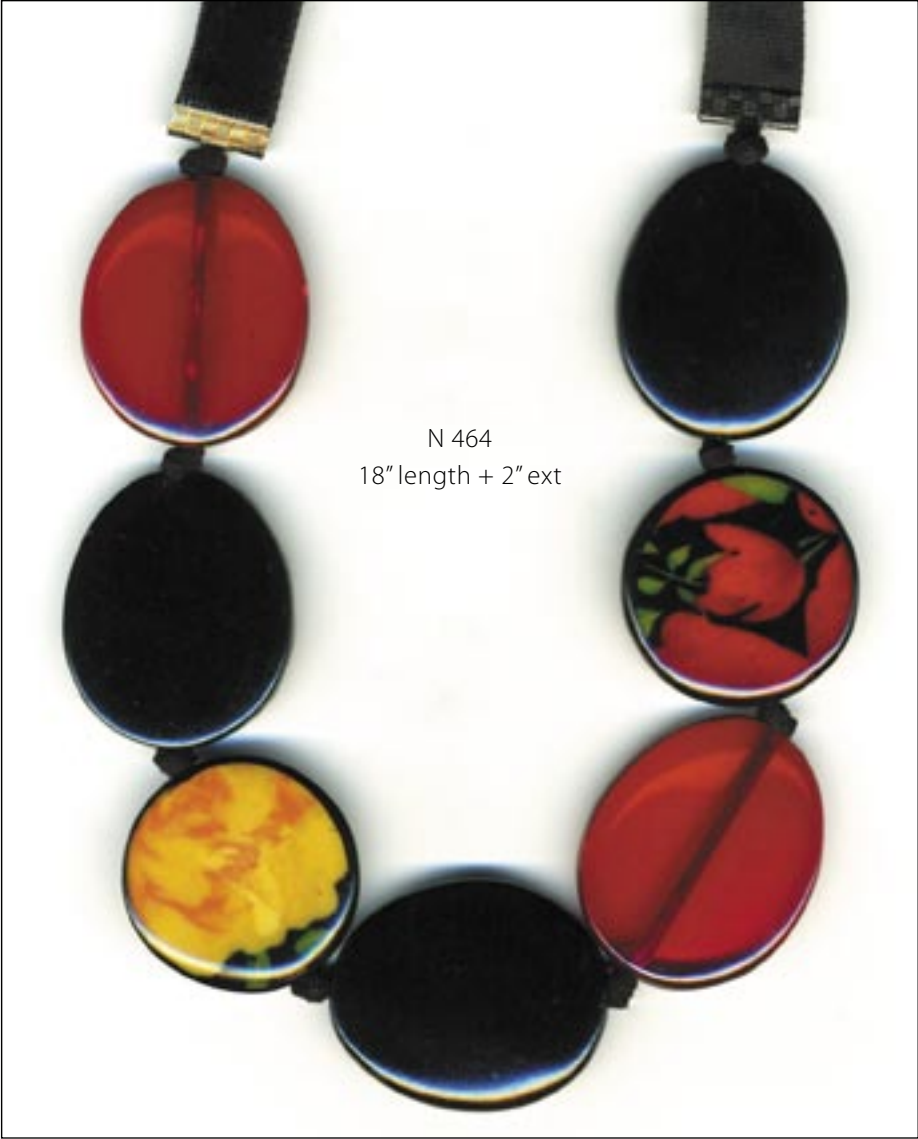


N 466  
18" length + 2" ext



N 465  
18" length + 2" ext

PHILLIPINE NECKLACES



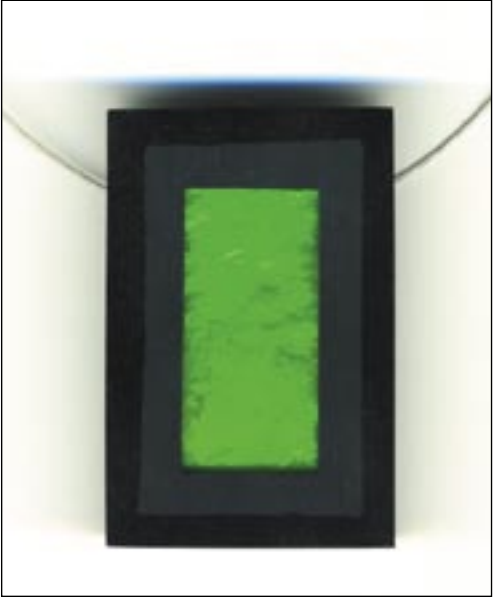
N 464  
18" length + 2" ext



N 460  
17" length + 2" ext



N 469  
20" length + 2" ext



N 461  
17" length + 2" ext

# PHILLIPINE NECKLACES



N 470  
20" length + 2" ext



N 462  
17" length + 2" ext



N 463  
17" length + 2" ext



N 471  
20" length + 2" ext

# SHAG WEAR

NECKLACES VOL.6

**BEAD WORLD INCORPORATED**

10150 - 156 STREET NW

EDMONTON, ALBERTA

T5P 2P9

PHONE: (780) 484 - 2263

FAX: (780) 487 - 8080

Email: [admin@beadworld.ca](mailto:admin@beadworld.ca)

Website: [www.beadworld.ca](http://www.beadworld.ca)

Please check our website frequently for continuous updates.